



## ENVIRONMENTAL & OCCUPATIONAL SAFETY and HEALTH SERVICES

### CAPABILITY STATEMENT

---



---

**8(a) Exp. 12-2028**, ACDBE, DBE, EBE, EDWOSB, MWBE, SBE, SDB, **SDVOSB**, Iowa TSB, VOSB, WOB and WOSB

# CONTENTS

ASBESTOS & LEAD Capability Statement .....3

ARC FLASH Capability Statement .....4

CONFINED SPACE Capability Statement .....5

DOT HAZMAT TRAINING Capability Statement .....6

ELECTRIC SAFETY Capability Statement .....7

ENVIRONMENTAL DUE DILIGENCE.....8

ENVIRONMENTAL DUE DILIGENCE.....9

ENVIRONMENTAL DUE DILIGENCE.....10

ENVIRONMENTAL REMEDIATION .....11

INDUSTRIAL HYGIENE / IAQ Capability Statement .....12

INDUSTRIAL HYGIENE / IAQ Capability Statement .....13

JHA / JSA Capability Statement .....14

LABORATORY SAFETY Capability Statement.....15

LEGIONELLA Capability Statement .....16

LOCKOUT TAGOUT Capability Statement.....17

SPCC Capability Statement .....18

SPCC Capability Statement .....19

UST / AST Capability Statement.....20

PAST PERFORMANCE & CODES .....21

MEET THE OWNER .....21

### **ASBESTOS & LEAD BASED PAINT**

ACT provides our clients with cost effective, accurate, and timely investigation and management services for projects involving asbestos and lead-based paint. We utilize state-of-the-art x-ray fluorescence technology for quick and accurate lead-based paint inspections and have decades of experience with asbestos inspections, project designs and project management.

ACT offers a tenured team of asbestos and lead based paint project managers and technicians. All our staff maintains requisite certification and safety training required to sample and manage asbestos and lead based paint.

### **WHO WOULD BENEFIT?**

Everyone benefits from an environment free of exposed lead-based paint and friable asbestos. Our clients that demand efficient and timely asbestos and lead based paint inspection services include construction contractors, municipalities, developers, and engineering firms. Many municipalities are responsible for U.S. Department of Housing and Urban Development (HUD)-funded lead-based paint inspection and remediation programs. ACT's staff has extensive experience managing and implementing HUD's requirements under these programs. Additionally, numerous colleges, universities, school districts, and hospitals have benefited from ACT's comprehensive asbestos and lead based paint inventories prior to renovation and demolition projects.

### **SERVICES**

- Municipal HUD LBP Program Management Services
- XRF Lead Based Paint Sampling
- Lead Based Paint Inventories
- Lead Risk Assessment
- Lead Based Paint Remediation Specifications
- Lead Clearance Inspections
- Asbestos Sampling
- Asbestos Inventories
- Asbestos Project Designs
- Demolition Specs for ACM-Containing Structures
- Air Monitoring
- Personal Exposure Monitoring
- Training that meets 40 CFR 763.92 and 29 CFR 1926.1101(k)(9)(ii){ All State & Federal requirements }

### ARC FLASH DATA COLLECTION

Experienced with all aspects of industrial and institutional, commercial electrical equipment. Hands-on knowledge including, equipment maintenance, installation, commissioning and troubleshooting of all types of electrical devices/equipment including: Switchgear, power distribution, drives, generators, controls and disconnects.

Each of our on-site personnel are specifically trained in all aspects of NFPA 70E, ANSI and IEEE data collection and documentation requirements, including safety, label placement and verification. Qualified to collect and document the proper information required according to all standards. Trained in all pertinent OSHA safety standards and well-practiced in applying proper safety techniques including risk analyses, hazard identification and safe work practices.

### ENGINEERING:

Each is specialized in institutional, industrial, commercial electrical Design as well as arc flash evaluations. This position is utilized for engineer software analysis of your existing equipment. Data collection is entered into our arc flash software at which point the engineer closely analyzes each setting, wire size, breaker part numbers, etc. to determine if changes can be made for hazard mitigation or code compliance concerns.

### WHAT TO EXPECT?

ACT Safe will collect cable lengths, type and sizes, over-current protective device types and settings, transformer impedance and other parameters as needed. If determining equipment parameters is not possible, ACT Safe will work with the Department of Veterans Affairs personnel to reach reasonable assumptions (I.e. for conductors, the assumption would be code-sized conductors). It may not be possible to obtain the short circuit withstand rating and time current curves of some old or obsolete equipment. ACT Safe responsibility in assessing such equipment is limited to evaluating the equipment nameplate and any operation manuals that are provided. During data collection, ACT Safe will note any abnormal conditions, including safety hazards, environmental factors that could affect reliability, outdated or potentially unreliable equipment, and code compliance concerns. Some of the items we will perform: Data Gathering and Field Verification; Short Circuit Study; Protective Device Coordination Study;

Arc Flash Hazard Analyses; Protective Device Settings; Equipment Labeling; Base Submittals in print and electronic versions as follows; Electrical system one-line drawings and Thermographic (Infrared Scan) Report.

### **WHY CONFINED SPACE SERVICES ARE REQUIRED**

Entering a confined space may be extremely hazardous. Therefore, it is important that anyone who must work in a confined space, or who supervises someone who must enter a confined space, understands the hazards involved. A confined space standard - OSHA regulation 29 CFR 1910.146 - is any type of chamber such as a storage tank, transformer vault, manhole, etc., where entry or exit is restricted. Ventilation in confined spaces may also be restricted and may cause adverse atmospheric conditions such as low oxygen and a buildup of toxic vapors and combustible gases within the confined space.

### **RESCUE PERSONNEL TRAINING**

The primary role of rescue service personnel is to help authorized entrants escape from permit spaces. ACT Safe has hundreds of years' experience with Confined Spaces to include providing Rescue personnel with the skills and tools needed to safely, effectively and quickly manage the escape of an authorized entrant (or others). Knowledge and skills needed:

- Having the capability to reach victim
- Knowing how to use required PPE
- Completing authorized entrant training

### **SERVICES**

Our staff are Authorized OSHA trainers, degreed (Bachelor, Master and PhD) and numerous other certifications in Safety, Confined Space, Industrial Hygiene (CIH), etc. Staff performing Confined Space Hazard Determinations has at least 20 years' experience each.

Confined space services:

- Hazard identification (to include exemption detail)
- Personnel Responsibilities;
- Employee Training;
- Personal Protective Equipment;
- Air Monitoring;
- Rescues;
- Potential Hazards;
- Entry Procedures;
- Permit Authorization; and
- Ventilation.
- Determine the hazards,
- Develop plans and
- Practice rescue drills until confident.

ACT Safe, LLC transportation regulatory experts help clients identify, classify, label, and ship all manner of dangerous goods by land, air, or sea, and manage the sometimes bewildering cross-border inconsistencies in international regulatory requirements.

### Transport of Dangerous Goods and Hazardous Materials (HazMat) -- U.S. / EU / International

Crucial to production and marketing is the ability to move the precursors and products safely and compliantly through the supply chain. The transport of such goods is governed by a complex network of national and international regulations, programs that have extremely broad applicability across many industries. Any company involved in transporting dangerous or hazardous materials, even at very small quantities, is required to comply with the regulations or seek a waiver.

## SERVICES

### Training

We are your one-stop shop. We conduct training sessions on DOT, ICAO/IATA, IMDG, Canadian Transport Emergency Centre — CANUTEC and perform at your location, in the language(s) of choice.

- Ground Workshop (49 CFR)
- Two-day Hazmat Ground Shipper Certification (DOT) Workshop - DOT hazardous materials regulations (49 CFR) that apply to all U.S. hazmat shipments.
- Air Workshop (IATA)
- Hazmat Air Shipper Certification (IATA) Workshop. This compliance workshop builds on your 49 CFR knowledge and teaches you the latest hazmat air shipping rules (IATA DGR).
- Vessel Workshop (IMDG)
- Hazmat Vessel Shipper Certification (IMDG) Workshop. You will learn the latest changes to the International
- Maritime Dangerous Goods (IMDG) Code and the unique rules for vessel transport.

### Audits

For a thorough assessment of your facility and existing systems and arranged for a regulatory audit. Our auditors can identify problem areas and suggest solutions. We minimize / reduce your chance for accidents and eliminate violations & potential fines.

*ACT provides Audits / Inspections.....*



## SDS INTERPRETATION, CLASSIFICATION AND TECHNICAL SUPPORT

When you're not familiar with the product and do not have time or sufficient knowledge to interpret an MSDS/SDS; contact one of our hazmat specialists. They will determine if product is regulated for transport and apply the corresponding regulation as per your transport needs.

Product of ACT Safe, LLC<sup>(SM)</sup>. Materials shall not be published or redistributed directly or indirectly in any medium. Contact [service@actsafellc.com](mailto:service@actsafellc.com) with questions.



ACT is a full-service company for Occupational Safety and Health (OSHA) to include training. ACT offers over 500 training courses for general industry (29 CFR 1910), Construction (29 CFR 1926) and Marine (29 CFR 1915). Electrical Safety is one of our specialty courses. Our training courses are designed utilizing OSHA 29 CFR 1910 Subpart S, NFPA 70E, IEEE 1584, NIOSH and the clients' procedures / policies (ex: Unified Facilities Criteria 03-560-04 Electrical O&M). Training techniques and delivery methods are modified depending on audience, location and facilities available. We utilize creative training techniques depending on the learner's education and experience to maximize edutainment and retention.

### SERVICES

Our staff consist of Authorized OSHA trainers, degreed (Bachelor, Master and PhD) and hold numerous certifications in Safety, LOTO, Arc Flash, etc. for electrical components 50 Volts or greater. Services include development, review, perform and provide technical recommendations for any of the following:

- Onsite – customized training
- Control of Hazardous Energy program
- Arc Flash program
- Audits / Inspections
- Reminder systems
- Hazard determinations for machine specific LOTO procedures. (Electrical; Hydraulic; Pneumatic; Mechanical; Gravitational; Thermal; Chemical; Fluids and gasses; Water under pressure; and/or Steam)
- Arc Flash studies / develop labeling system
- Arc Flash PPE determination
- Shore-to-Ship Electrical Connections, Procedures and Safety
- Electrical High Voltage Safety
- Circuit Breaker Maintenance & Secondary Voltage Breakers/Switches
- Substation and Switching Station
- Underground Maintenance (to include Underground Line Maintenance
- Overhead Maintenance
- Emergency Generator Operation & Maintenance
- Microgrid Operation



ACT is a multifaceted Regulatory Compliance Service provider assisting companies with local, state, and federal regulatory compliance. ACT can develop a specialized compliance management system tailored to your specific regulatory needs. ACT will act as an extension of your current staff, with a role range from permit applications to fully integrated and comprehensive services handling all aspects of your regulatory compliance needs.

Keeping track of the regulatory compliance requirements is both daunting and cumbersome due to state and federal agencies having specific reporting requirements with regard to hazardous materials. ACT has the expertise and experience to assist with a variety of compliance and permitting activities required by regulatory agencies for industrial and commercial facilities. Our services are designed to help our clients evaluate and implement regulatory compliance requirements at the local, state, and federal levels.

### **WHO WOULD BENEFIT?**

ACT has a network of Certified Industrial Hygienists and Hazardous Material Professionals, contaminated site specialists to quickly provide services for your regulatory compliance needs. Whether your company is a certified small business or a Fortune 500 company, the regulatory process is very similar. ACT can assist any size company in developing a program for environmental compliance.

### **SERVICES**

- Air Permitting
- Minor Source Emission Inventories (MSEI)
- Personnel Health & Safety Monitoring (Noise, Dust, Chemical)
- Chemical Inventory
- State and Federal Compliance (EPCRA, Tier II, TRI)
- Stormwater Pollution Prevention Plan (SWPPP)
- Stormwater Sampling and Analyses
- National Pollution Discharge Elimination System (NPDES) Permits
- Spill Prevention, Control and Countermeasure (SPCC) Plans
- Erosion Control Inspection
- Resource Conservation and Recovery Act (RCRA) Management
- Waste Minimization Plans
- Multi-Media Compliance Audits





ACT provides our clients with cost effective, accurate, and timely environmental services. As a premier provider of environmental due diligence services, our clients have benefited from our vast experience from a wide range of environmental projects. This includes Phase I Environmental Site Assessments to full scale remediation of contaminated soil and groundwater.

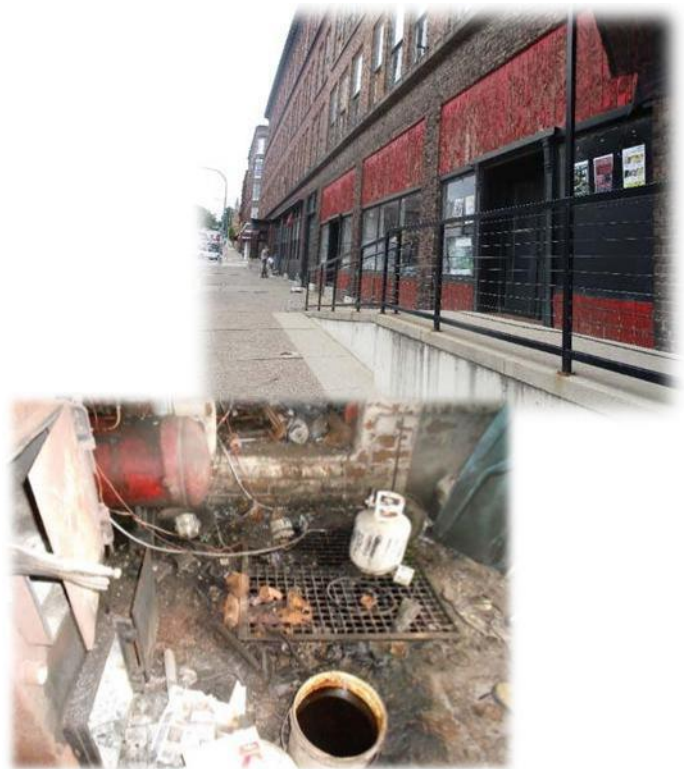
Due Diligence - “The process of inquiring into the environmental characteristics of a parcel of commercial real estate or other conditions, usually in connection with a commercial real estate transaction. The degree and kind of due diligence vary for different properties and differing purposes.” (Source – ASTM1527-13) Each degree and type of due diligence afford varying levels of liability protection against risk. Depending on a client’s level of comfort with potential risk associated with a property, they may choose to complete a minimal level or more comprehensive level of due diligence.

### WHO WOULD BENEFIT?

As a potential entity involved with real estate transactions, there is a level of liability associated with these properties. Entities often require some type of due diligence prior to closing. These levels of due diligence can vary from a simple environmental screen to a more comprehensive Phase I or II Environmental Site Assessment. With the completion of more than 5,000 environmental site assessments, ACT staff provides an in-depth knowledge base of environmental regulations to implement a successful strategy for each client on a nationwide basis.

### SERVICES

- Environmental Screens
- Records Search with Risk Assessment
- Phase I Environmental Site Assessments
- Phase II Environmental Site Assessments
- Hazardous Materials Management
- Contaminant Delineation / Remediation
- Vapor Intrusion Testing
- Voluntary Cleanup Fund Enrollment and Management



## **NEPA / SEPA DESCRIPTION**

Environmental Planning involves facilitating decision making to carry out sustainable organizational growth, natural resource management, and community development. ACT environmental planners, scientists and compliance specialists provide objective methods, data, and analysis related to actions that may impact the natural and physical environmental as well as social, political, economic and policy factors.

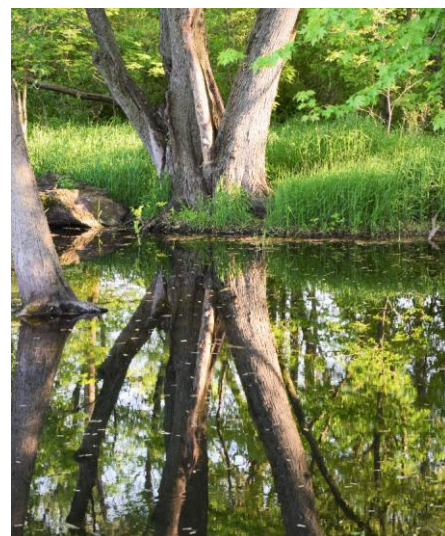
National Environmental Policy Act (NEPA) and State Environmental Policy Act (SEPA) planning and impact assessment services are often a necessary and valuable component of community infrastructure and development projects. Environmental Action and Resiliency Plans are also becoming a critical component of the municipal comprehensive planning process. These Plans can enhance natural resources for their economic and recreational value. Environmental screens and constraint analyses involving archeological, cultural, ecological, biological, and wetland assessments have also become the norm for commercial development projects. These planning screens help assure commercial development proceeds on schedule and in compliance with the National Historic Preservation Act, national and state archeological laws and regulations, Endangered Species Act, and the Clean Water Act.

## **WHO WOULD BENEFIT?**

Environmental Planning presents the unique opportunity for a federal, state, or local agency, community, utilities, watershed management authority, agricultural producer, or developer to engage in a disciplined decision-making process that will result in outcomes benefiting not only the natural environment, but also the economies and social well-being of the human environment. Thorough environmental planning will help ensure lead agencies, businesses, or decision-making bodies comply with a whole host of environmental regulations as well as adopt planning objectives that favor sustainable growth without compromising ecological systems. Project proponents, communities, and the physical and natural environment all benefit from environmental planning.

## **SERVICES**

- NEPA CATEXs, EAs, EISs, NHPA Section 4(f), LAWCON Section 6(f)
- Wetland and Stream Delineations, Mitigation, and Permitting
- Water Quality Sampling and Analyses
- Surface Water Quality Mitigation Strategies
- Water Resource Planning and Management
- Stormwater Pollution Prevention Planning, Sampling, and Analy
- NHPA Section 106 Compliance
- Phase I and Phase II Archeological Investigations
- Biological Surveys
- Threatened and Endangered Species and Habitat Evaluations
- Architectural Evaluations and NRHP Nominations
- Natural Resource Conservation Plans
- Forest Management Plans



ACT is a multifaceted Regulatory Compliance Service provider assisting companies with local, state, and federal regulatory compliance. ACT provides environmental planning, permitting, restoration, monitoring, and compliance services to a wide range of stakeholders including private corporations, regulators, and conservation groups. ACT will act as an extension of your current staff, with a role range from permit applications to fully integrated and comprehensive services handling all aspects of your regulatory compliance needs.

Keeping track of the regulatory compliance requirements is both daunting and cumbersome due to state and federal agencies having specific reporting requirements with regard to hazardous materials. ACT has the expertise and experience to assist with a variety of compliance and permitting activities required by regulatory agencies for industrial and commercial facilities. Our services are designed to help our clients evaluate and implement regulatory compliance requirements at the local, state, and federal levels.

Core services include project management, physical and biological resource inventory and analysis, environmental compliance, ecological restoration, cultural and archaeological resource management, data management, and Geographic Information Systems (GIS). We also provide professional and technical support for human health services. In addition, we have teaming agreements in place to provide landscape architecture, engineering, remediation, surveying, and construction services.



## **SERVICES**

- Environmental remediation services of non-hazardous and hazardous waste
- In-situ mixing of hazardous waste, transportation and disposal
- Emergency spill cleanup response and services, emergency relief services for disasters
- Soil vapor extraction and air sparging systems
- Groundwater recovery systems (GWR)
- Underground and above ground storage tank removal and abandon-in-place
- Mine reclamation services
- Lagoon construction and closure

Product of ACT Safe, LLC<sup>(SM)</sup>. Materials shall not be published or redistributed directly or indirectly in any medium. Contact [service@actsafellc.com](mailto:service@actsafellc.com) with questions.



ACT Safe, LLC is a multifaceted Regulatory Compliance Service provider assisting companies with local, state, and federal regulatory compliance. We have thousands of years combined experience as former regulators and compliance managers. ACT Safe provides Environmental, Occupational Safety and Health (OSH), Engineering, and Transportation solutions. From permitting, audits, Industrial Hygiene, Indoor Air Quality, ACM / LBP, expert witness, hazard determinations, written programs, training and file plan management - we cover your needs.

## **INDUSTRIAL HYGIENE**

Industrial hygiene services are focused on the anticipation, recognition, evaluation, communication and control of environmental stressors in the workplace environment. Such environmental stressors can include biological, chemical, physical, ergonomic or psychosocial categories and may result in injury, illness, impairment, or affect the overall wellbeing of workers and members of the community. Employers need a rigorous and professional program with independent evaluation to determine the potential for hazards, an evaluation of exposures or risk in the workplace, and recommended corrective actions. ACT Safe has a team of professional industrial hygienists as well as licensed asbestos and lead based paint technicians.

## **WHAT SERVICES WE PROVIDE**

Our team will work in tandem with your staff to both assess and control the physical, chemical, biological or environmental hazards in the workplace or community that could cause injury or disease. ACT Safe also maintains an assortment of industrial hygiene equipment to test and assess nearly any type of indoor environment. A detailed listing of our services includes:

- Identify health & safety problems in the workplace
- Assess Engineering Controls/Ventilation
- Conduct worksite and or personal sampling and analysis for exposure levels for chemicals, lead, asbestos, silica, mold and noise
- Assess all worksite environmental stressors
- Develop and /or recommend corrective measures to eliminate hazards and prevent future problems to include engineering and non-engineering controls (to include work practices).
- Assist in developing mandated health & safety programs
- Interpret safety data sheets (SDS)
- Perform Chemical Speciation
- Determine Community Exposures and risks
- Provide a full Health Risk Analysis & Hazard Communication

## **OCCUPATIONAL SAFETY AND HEALTH**

**Air Monitoring:** ACT performs both personal and area monitoring for potential air contaminants in working environments. Inhalation exposures to hazardous materials are evaluated by comparing them to Occupational Exposure Limits (OELs) that have been developed for air contaminants. Generally accepted OELs include the Permissible Exposure Limits (PELs) established by the Occupational Safety and Health Administration (OSHA), the Threshold Limit Values (TLVs) established by the American Conference of Governmental Industrial Hygienists (ACGIH) and the Recommended Exposure Limits (RELs) established by the National Institute for Occupational Safety and Health (NIOSH).

Product of ACT Safe, LLC<sup>(SM)</sup>. Materials shall not be published or redistributed directly or indirectly in any medium. Contact [service@actsafellc.com](mailto:service@actsafellc.com) with questions.

**Noise Monitoring:** Noise dosimeters and sound-level meter readings are used to evaluate employees' noise exposures. Employees' noise exposures are evaluated according to OSHA guidelines (or applicable state regulations). Employees whose noise exposures potentially exceed the "Action Limit" (85 dBA) must be included in a Hearing Conservation Program (HCP) and employees whose noise exposures exceed the "Permissible Exposure Limit" (PEL) (90 dBA) must also wear appropriate hearing protection until feasible noise reduction controls can be implemented.

## **SAFETY INSPECTION**

ACT Safe, LLC personnel perform safety inspections that follow all OSHA 29 CFR 1910, 1926 and 1915 applicable standards, National Institute of Health (NIH), Centers for Disease Control & Prevention (CDC), National Institute for Occupational Safety and Health (NIOSH), Environmental Protection Agency (EPA), American Industrial Hygiene Association (AIHA), National Fire Protection Association (NFPA), National Electric Code (NEC) and the client's internal policies.

Our in-depth inspect review all exposure that pose a hazard to health and safety of the employee. Focused areas:

- Engineering Controls - Changes to the work environment to reduce hazards examples include: chemical fume / ventilation hoods, showers, eye washers, and Biological Safety cabinets.
- Administrative Controls- those that modify work schedules and tasks examples include: Chemical hygiene plan and Standard Operating procedures (example: Spill Plan, Emergency Response, OSHA HazCom & PPE program, Inventory Control plan, etc.)
- Work Practices-Procedures for safe and proper work. Proper techniques used by workers.
- Personal Protective Equipment- Protective Gear examples: respirators, face shields, goggles, disposable gloves, etc.

## **WORKPLACE EXPOSURE ASSESSMENT**

The Workplace Exposure Assessment is the multi-disciplinary field that identifies and characterizes workplace exposures, develops estimates of exposure for exposure-response and risk assessment studies, and evaluates the significance of exposure and effectiveness of intervention strategies.

Throughout this assessment the following Occupational exposure will be performed:

- Identification,
- Characterization,
- Estimation, and
- Evaluation of workplace hazards.

Product of ACT Safe, LLC<sup>(SM)</sup>. Materials shall not be published or redistributed directly or indirectly in any medium. Contact [service@actsafellc.com](mailto:service@actsafellc.com) with questions.



## **JOB HAZARD ANALYSIS / JOB SAFETY ANALYSIS**

ACT Safe, LLC is a multifaceted Regulatory Compliance Service provider assisting companies with local, state, and federal regulatory compliance. We have thousands of years combined experience as former regulators and compliance managers. ACT Safe provides Environmental, Occupational Safety and Health (OSH), Engineering, and Transportation solutions. From permitting, audits, expert witness, hazard determinations – PPE, JHA, JSA, Confined Spaces, LOTO; written programs, **training** and file plan management

### **WHY JOB HAZARD ANALYSIS**

A JHA is the breaking down of a job into its component steps and then evaluating each step, looking for hazards. Each hazard is then corrected or a method of worker protection (safe practice or PPE) is identified. Additional requirements for worker training, certification, authorization, etc., may also be identified for the process or job. The final product is a written document.... a standard of safe operation for each job. JHA, sometimes referred to as a Job Safety Analysis (JSA), is covered in good detail in the Job Hazard Analysis, OSHA Publication 3071.

### **THE BENEFITS OF A JHA**

Even simple processes are complex — they are impacted by human behavior, workplace variables, other business and natural forces, raw material variables, normal wear and tear, and more. ACT Safe, LLC performs JHAs that break out the steps of a job, evaluate a variety of potential hazards or other related safety requirements, recommend effective controls, and complete a written document that provides a legacy of safe work practices for that job.

Some benefits include:

- Set performance standards
- Standardize operations based on acceptable safe practices and Personal Protective Equipment (PPE)
- Provides a form of training documentation regarding the employee's knowledge of the job requirements
- Comply with OSHA requirements
- Reduces injuries
- Reduces absenteeism
- Increases productivity
- Increases morale
- Protects employees
- Assists in standard-specific compliance (e.g., personal protective equipment [PPE], Hazard Communication, etc.)

Product of ACT Safe, LLC<sup>(SM)</sup>. Materials shall not be published or redistributed directly or indirectly in any medium. Contact [service@actsafellc.com](mailto:service@actsafellc.com) with questions.

## LABORATORY SAFETY INSPECTION

In the United States, daily close to 1 million people work in a laboratory environment. Employees are exposed to hazards that could affect their health. ACT Safe, LLC personnel perform laboratory safety inspections that follow OSHA 29 CFR 1910.1450 and all other 29 CFR applicable standards, National Institute of Health (NIH), Centers for Disease Control & Prevention (CDC), National Institute for Occupational Safety and Health (NIOSH), Environmental Protection Agency (EPA), American Industrial Hygiene Association (AIHA), National Fire Protection Association (NFPA), National Electric Code (NEC) and the client's internal policies.

Our in-depth inspect review all exposure that pose a hazard to health and safety of the employee. Focused areas:

- Engineering Controls - Changes to the work environment to reduce hazards examples include: chemical fume / ventilation hoods, showers, eye washers, and Biological Safety cabinets.
- Administrative Controls- those that modify work schedules and tasks examples include: Chemical hygiene plan and Standard Operating procedures (example: Spill Plan, Emergency Response, OSHA HazCom & PPE program, Inventory Control plan, etc.)
- Work Practices-Procedures for safe and proper work. Proper techniques used by workers (example: no mouth pipetting,).
- Personal Protective Equipment- Protective Gear examples: respirators, face shields, goggles, disposable gloves, etc.
- Chemical review (speciation) / Industrial Hygiene monitoring – review / perform to assure that laboratory employees' exposures to such substances do not exceed the permissible exposure limits specified in 29 CFR part 1910, subpart Z.



## WORKPLACE EXPOSURE ASSESSMENT

The Workplace Exposure Assessment is the multi-disciplinary field that identifies and characterizes workplace exposures, develops estimates of exposure for exposure-response and risk assessment studies, and evaluates the significance of exposure and effectiveness of intervention strategies.

Throughout this assessment the following Occupational exposure will be performed:

- Identification,
- Characterization,
- Estimation, and
- Evaluation of workplace hazards.

At each stage, ACT Safe, LLC considers the available information and develop a course of action that may include continuing along the original exposure assessment process, determining that no further action is required, performing additional hazard identification, refining the exposure assessment, or improving or adding engineering and/or administrative controls.

Product of ACT Safe, LLC<sup>(SM)</sup>. Materials shall not be published or redistributed directly or indirectly in any medium. Contact [service@actsafellc.com](mailto:service@actsafellc.com) with questions.

## LEGIONELLA



ACT Safe, LLC is a multifaceted Regulatory Compliance Service provider assisting companies with local, state, and federal regulatory compliance. Our microbiology lab partners have been specifically designed to process environmental samples suspected of harboring Legionella. Specialized sample containers are provided to our customers for collection of samples from potable water systems (bulk water and surface swabs) and cooling tower water. Samples that arrive at our laboratory are immediately processed and results can be reported in as few as 4 business days.

ACT Safe, LLC adheres to the methods recommended by the Centers for Disease Control (CDC) for the detection of Legionella. These methods involve a series of steps including concentration of samples that contain few bacteria, selective suppression of non-Legionella bacteria, viable culture and serological confirmation of Legionella. Optional services include having our team consult with you if assistance interpreting test results and/or remediating your systems is required. It is our intention to assist our customers in making sure that their facilities are being managed in safe and environmentally responsible manner.

## LOCKOUT TAGOUT

ACT is a full-service Occupational Safety and Health (OSHA) company. Our staff are Authorized OSHA trainers, degreed (Bachelor, Master and PhD) and numerous other certifications in Safety, LOTO, Industrial Hygiene (CIH), etc. Staff performing LOTO Hazard Determinations have at least 20 years' experience each with OSHA's Control of Hazardous Energy (Lockout/Tagout) - 29 CFR 1910.147 and Lockout/Tagout Electrical Safe Work Practice Standard - 29 CFR 1910.333.

### LOTO Hazard Determination:

- Develop / implementation written Control of Hazardous Energy program.
- Develop Audits / Inspections reminder systems
- Perform Hazard determinations for machine specific LOTO procedures. (Electrical; Hydraulic; Pneumatic; Mechanical; Gravitational; Thermal; Chemical; Fluids and gasses; Water under pressure; and/or Steam)
- Develop / implementation of machine specific LOTO procedures
- Develop / implementation of File Plan System for program sustainability
- Training – On-site (Site/ Hazard Specific)



**\*ACT Safe, LLC's LOTO Form has been issued an US Air Force form number as Best Practice. \***

## **SPILL PREVENTION, CONTROL AND COUNTERMEASURE (SPCC)**



Requirements for facilities to develop and implement Spill Prevention, Control, and Countermeasure (SPCC) plans were originally published in 1973 under the authority of the Federal Water Pollution Control Act, as amended (“Clean Water Act”), Section 311, *Oil and Hazardous Substance Liability*. The implementing regulations, promulgated at 40 CFR 112, were significantly revised in 2002 and amended a number of times to provide clarity and improve flexibility for regulated facilities. These Oil Pollution Prevention regulation establish requirements for the prevention of, preparedness for, and response to discharges to Waters of the United States at non-transportation-related facilities meeting applicability criteria.

### **WHICH FACILITIES ARE SUBJECT TO SPCC REGULATIONS?**

- Facility (or part of facility) is considered non-transportation related.
- Facility could reasonably be expected to discharge oil in quantities that may be harmful into navigable waters or adjoining shorelines. (Harmful discharge includes any sheen on water surface.)
- Total aggregate aboveground oil storage capacity is greater than 1,320 gallons of oil.
- Total aggregate underground capacity of completely buried storage tanks is greater than 42,000 gallons of oil.
- Most facilities with a total aboveground oil storage capacity of 1,320 gallons or more are subject to SPCC regulations.

### **SPCC REGULATION APPLY TO ANY FACILITY MEETING THE ABOVE CRITERIA, INCLUDING:**

- Maintenance Activities & Construction Sites
- Manufacturing & Assembly Facilities
- Military Bases and Installations & Government Facilities
- Farms & Tank Farms
- Fueling Racks & Fuel Transfer
- Oil Production Facilities & Bulk Oil Storage and Transfer Operations
- Drum Storage Areas & Emergency Generators



## WHAT TO EXPECT?

- Mobilized a Registered Professional Engineer / Environmental Scientist to project site.
- Prepared site sketch (CAD) to show facility features including regulated oil storage, piping, buildings, secondary containments, fencing, lighting, and apparent drainage. Site sketches included hazardous waste storage locations, spill response equipment, and fire protection equipment.
- Quantified oil storage in USTs/ASTs and other regulated oil storage (55 gallons and greater). Established appropriate standards for required UST/AST integrity testing and brittle fracture evaluation. Identified cathodic protection, inventory methods and frequency, type and location of piping/supports, etc.
- Compared size of existing secondary containment and unloading/loading basins with SPCC required capacity, including allowances for precipitation.
- Compared site to state UST/AST rules (i.e. registration, secondary containment, inventory, cathodic protection, overfill).
- Reviewed previous oil spill history of the site, including state spills lists and federal Emergency Response Notification System database.
- Reviewed facility drainage, and spill prediction to surface water, storm sewer lines, and sanitary sewer lines.
- Prepared a release notification plan with phone numbers and addresses of government agencies to contact in the event of a release.
- Developed a contingency plan for response to spills.
- Compared existing security, lighting, fencing, signs, caps (on pipes), and locks (on valves or controls) to SPCC requirements.
- Identified record keeping requirements such as product inventory/reconciliation, facility inspections, water discharge, personnel training, and integrity testing.
- Established procedures for facility unloading and loading.
- Prepared a written SPCC plan, including forms (inspection, water discharge, inventory), and a certification of the applicability of the substantial harm criteria. The SPCC Plan incorporated hazardous waste management provisions that are sufficient to comply with the requirements of the Contingency Plan and Emergency Procedures.

ACT provides superior Underground Storage Tank (UST) & Aboveground Storage Tank (AST) repair services and excellent customer support throughout the United States and Canada. We specialize in both shotcrete/gunite solutions and carbon fiber repair.



Concrete Silo Liners - Reinforce the structural integrity of your silo.



Hopper Installation & Repair - We can quickly repair your damaged hopper or install a new one.



Carbon Fiber Repair  
Ten times stronger than steel, non-corrosive, and maintenance free.



Silo Crack & Delamination  
Repair Crack and Patch Repair services for proper silo maintenance.



Shotcrete / Gunite Repair  
We provide Shotcrete / Gunite services to repair damaged concrete or strengthen existing structures.



Cosmetic Repair – We restore your facility to the community landmark it was intended to be: strong, proud, and American.



Rupture Repair & Disaster Recovery - Our experienced team can execute a Disaster Recovery plan that will get you back to speed as quickly as possible.



Silo Roof Cornice & Beam Pocket Repair - Roof Cornice and Roof Beam Pocket repair for your concrete silo.



Grain Bin Clean Out & Sanitation  
We provide Grain Bin Clean Out and Sanitation services

### PAST PERFORMANCES

ACT works for various business, industries and government agencies. To include Fortune 500 companies, local, state and federal government agencies, and large institutions. Specific sectors include aerospace, agriculture / grain, automotive, building / construction, chemical, food & beverage, general, government & public sectors, healthcare & medical, oil & gas, plastics and transportation.

- USAF (Air Force)
- Veterans Administration (VISN 6, 8, 9, 12, 13, 15 & 23)
- Merck (Pharmaceutical)
- Bureau of Reclamation
- Coleman Company
- Nestle / Purina
- Pepsi (PBG)
- Pfizer (Pharmaceutical)
- Plains Marketing L.P.
- Smithfield Foods / ConAgra
- USCG (Coast Guard)

### DIFFERENTIATORS

SBA 8(a) Expiration 12-2028

Veteran Owned, Operated and staffed (Service Disable Veteran Owned Small Business - SDVOSB)

Small Business Administration certified Economically Disadvantaged Woman Owned Small Business

Local, State and Federal government contracting experienced

Our Team Members have extensive training, education and experience in their chosen discipline.

We have set on boards / commissions at the State, Federal and International level as experts in our field providing direction and input on rules and policies.

### CODES AND DATA

DUNS 079689293

CAGE 7CVG3

NAICS – 524291, 541330, 541420, 541512, 541611, 541614, 541620, 541690, 541711, 541712, 541820, 561320, 561612, 611710, 611699, 922160, 238990, 518210, 541511, 611430, 621210, 621399, 236220, 541380, 541350, 926150, 926120, 922190

We accept credit and purchase cards.



Contact – Lorna G Puntillo,  
712-204-9274; [lorna.puntillo@actsafellc.com](mailto:lorna.puntillo@actsafellc.com)  
[service@actsafellc.com](mailto:service@actsafellc.com)  
[www.actsafellc.com](http://www.actsafellc.com)



## MEET THE OWNER



Lorna Puntillo has worked over 30 years in the field of Environmental, Health and Safety in a multitude of private sector businesses, industries and for/along with multiple municipalities. A veteran of the United States Air Force Ms. Puntillo started her career as a Bioenvironmental Engineering Specialist and still holds a deep commitment to serving our nation's current military force and supporting her fellow veterans and their families with employment opportunities. Ms. Puntillo has held many prestigious positions to include her appointment by the Governor of Iowa as the Environmental Protection Commissioner. Ms. Puntillo is passionate about the protection of the workforce as well as preservation of vital resources. She believes that through understanding regulations and obstacles faced while trying to adhere to standards companies can find a meaningful and cost effective happy medium.



ACT Safe, LLC is a Service-Disabled Veteran & Woman Owned & SBA 8(a) Small Business founded in 2011 (Occupational Safety & Health, Environmental, Transportation and Security).



**Veteran – Founded / Operated / Grown / Proud**

***Find out more about us at:***

<https://actsafellc.com>

[service@actsafellc.com](mailto:service@actsafellc.com)

***LinkedIn -*** <https://www.linkedin.com/in/lorna-g-puntillo-a49a2a14>